

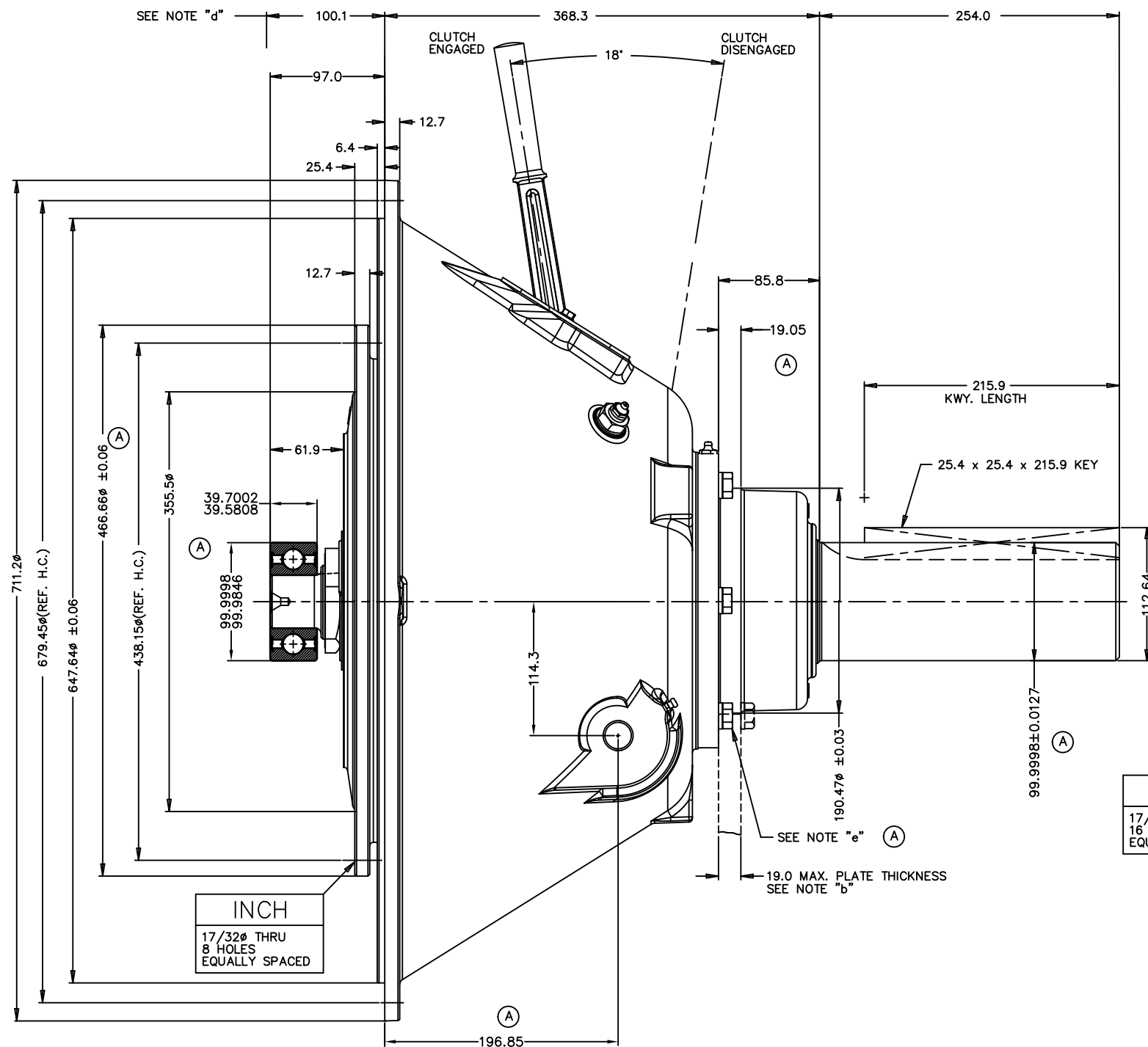


***For Your Convenience: This Twin Disc
File Is Shared By Diesel Parts Direct***

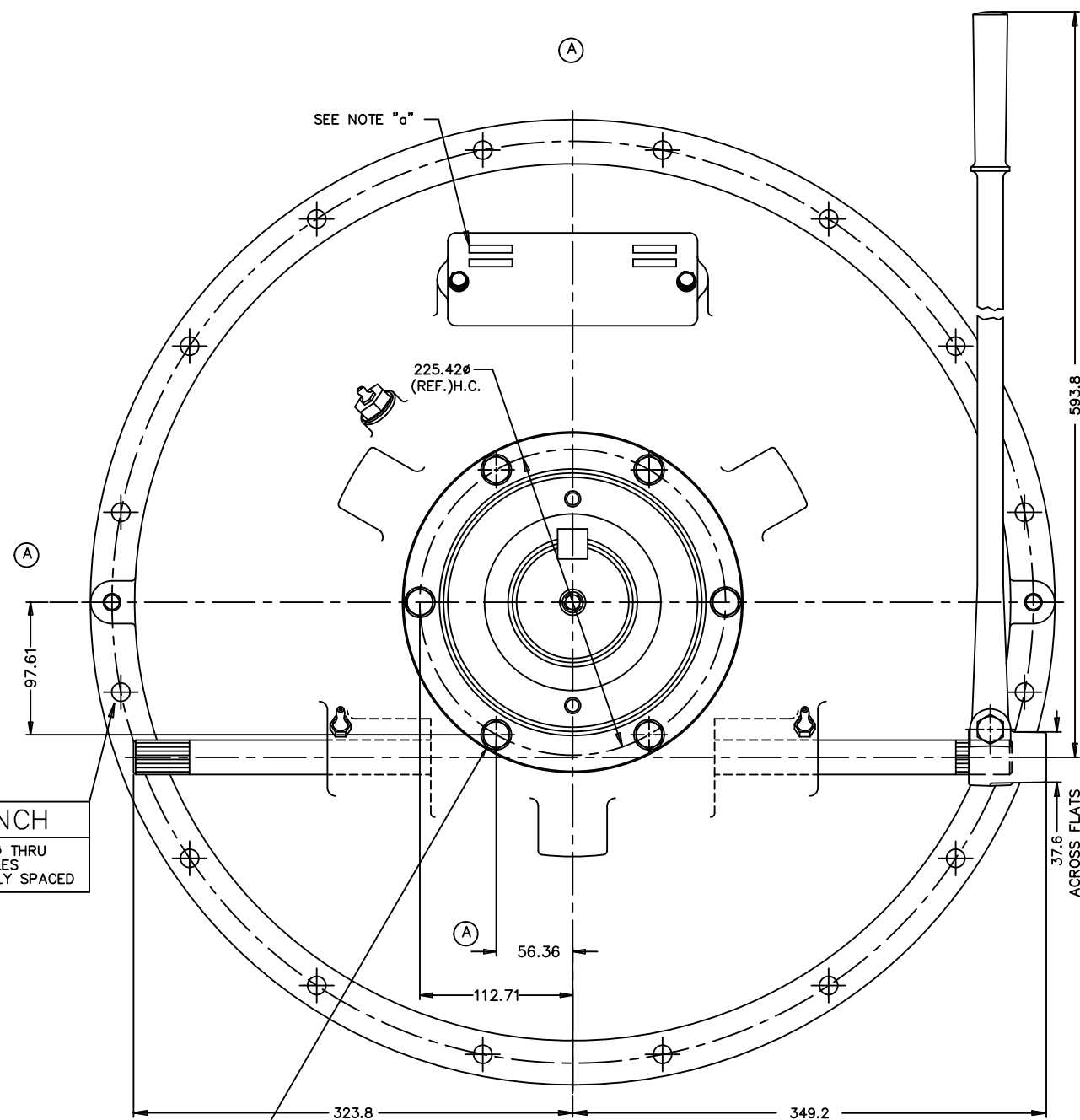


YOUR ONE STOP SUPERSTORE FOR DIESEL ENGINE PARTS

SHOP NOW



INCH
17/32" THRU
16 HOLES
EQUALLY SPACED



Ⓐ GENERAL NOTES:

- REFER TO BOM LIST WHEN ORDERING PARTS.
- A SUPPORT PLATE MUST BE USED WHEN SIDE LOADS ARE APPLIED TO SHAFT.
- REFER TO CARE & OPERATION MANUAL FOR ADDITIONAL INFORMATION.
- FACE OF SAE HOUSING TO BOTTOM OF PILOT BORE IN FLYWHEEL.
- TORQUE TO 108 +9/-8 Nm (80 ± 6 LB.-FT.).
- REFER TO TWIN DISC STANDARD S364R FOR COLLAR LUBRICATION AND MAINTENANCE PROCEDURES.
- DIMENSIONS WITHOUT TOLERANCE ARE FOR REFERENCE ONLY.

NOTICE: THIS PRINT CONTAINS PROPRIETARY INFORMATION AND IS NOT TO BE USED IN ANY MANNER DETRIMENTAL TO THE INTERESTS OF TWIN DISC, INCORPORATED RACINE, WI 53403 - USA THIS NOTICE IS NOT INTENDED TO NULLIFY OR LIMIT RIGHTS GRANTED TO THE U.S. GOVERNMENT OR OTHERS BY CONTRACT.

MATERIAL	WEIGHT	UNLESS OTHERWISE SPECIFIED DIMENSIONS ARE mm MACHINED DIMENSIONS	DATE
HEAT TREAT	kg	±0.75	01/24/13
SURFACE TREATMENT	lb	±0.25	SCALE .45 = 1
FIRST USE	ASSY.	±0.13	DRN. YU
MODEL	SP314P004	ALL ANGULAR TOLERANCES ±1°	CHK. DAJ
NAME	SP314P0 PTO	GEOMETRIC TOLERANCING PER ANSI Y14.5M 1992	APPD. GEM
			SHEET 2 OF 2 REV A