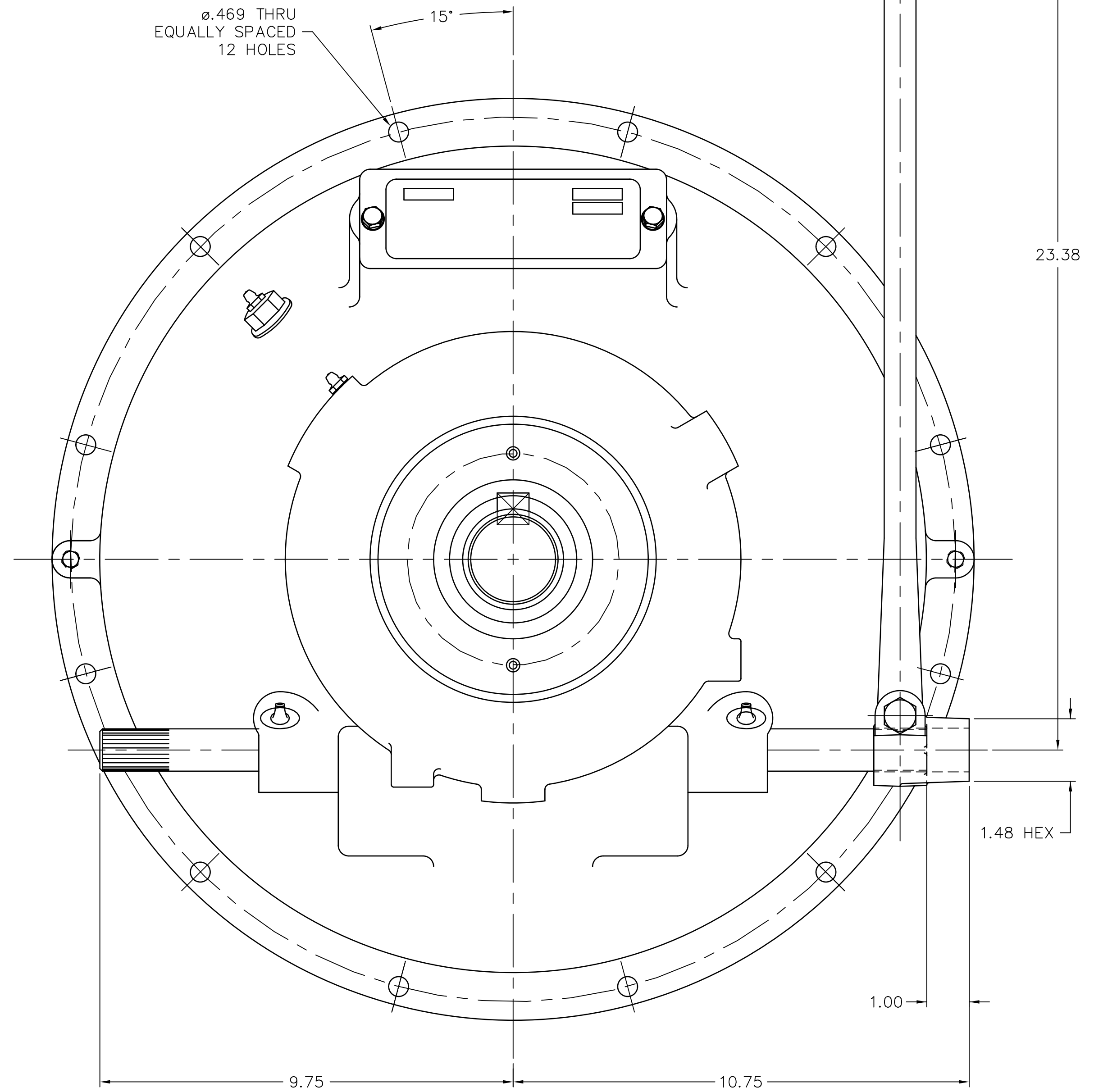
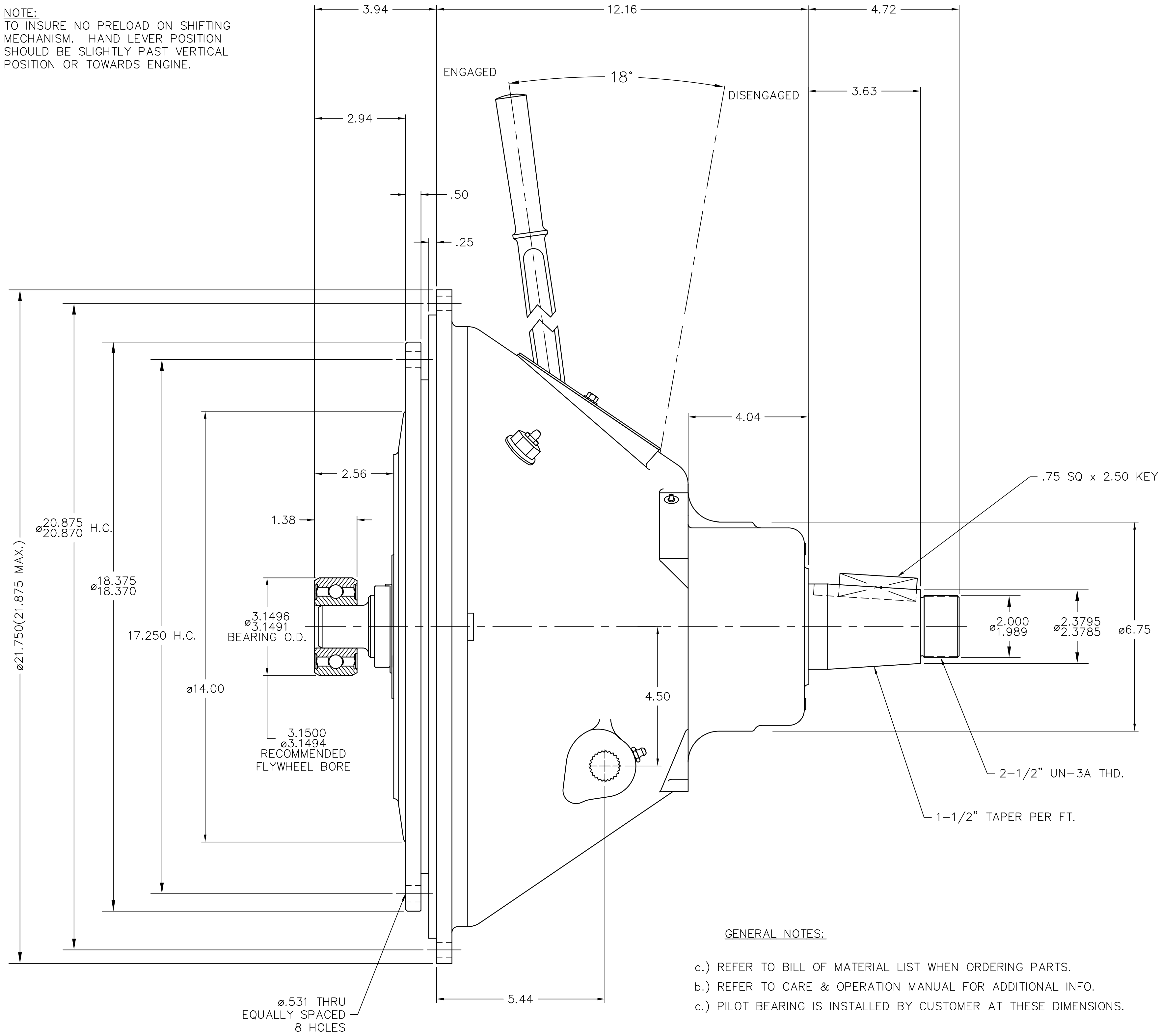


NOTE:
TO INSURE NO PRELOAD ON SHIFTING
MECHANISM. HAND LEVER POSITION
SHOULD BE SLIGHTLY PAST VERTICAL
POSITION OR TOWARDS ENGINE.



GENERAL NOTES:

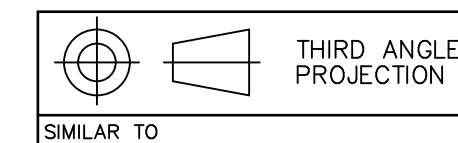
- a.) REFER TO BILL OF MATERIAL LIST WHEN ORDERING PARTS.
- b.) REFER TO CARE & OPERATION MANUAL FOR ADDITIONAL INFO.
- c.) PILOT BEARING IS INSTALLED BY CUSTOMER AT THESE DIMENSIONS.

NOTES:

DIMENSION WITHOUT TOLERANCES ARE FOR REFERENCE ONLY

NOTICE! THIS PRINT CONTAINS
PROPRIETARY INFORMATION AND IS
NOT TO BE USED IN ANY MANNER
DETRIMENTAL TO THE INTERESTS OF
TWIN DISC, INCORPORATED
RACINE, WI 53403 - USA
THIS NOTICE IS NOT INTENDED
TO NULLIFY OR LIMIT RIGHTS
GRANTED TO THE U.S. GOVERNMENT
OR OTHERS BY CONTRACT.

MATERIAL	WEIGHT LBS. IN ³	UNLESS OTHERWISE SPECIFIED MACHINED DIMENSIONS X.X ±0.000 X.XX ±0.010 X.XXX ±0.005	DATE 05-31-00
HEAT TREAT	FIRST USE	ALL ANGULAR TOLERANCES ±1°	SCALE .50 = 1
SURFACE TREATMENT	ASSY. MODEL SP114P1	GEOMETRIC TOLERANCING PER ANSI Y14.5M 1982	DRN. D.J.H.
	NAME SP114P1 PTO		CHK. R.S.L.
			APPD. J.T.S.



TWIN DISC
INCORPORATED
RACINE, WI 53403 - USA

SP114P117

SHEET 2 OF 2	REV
--------------	-----

F | I | E | I | D | I | C | B | I | A

6
5
4
3
2
1