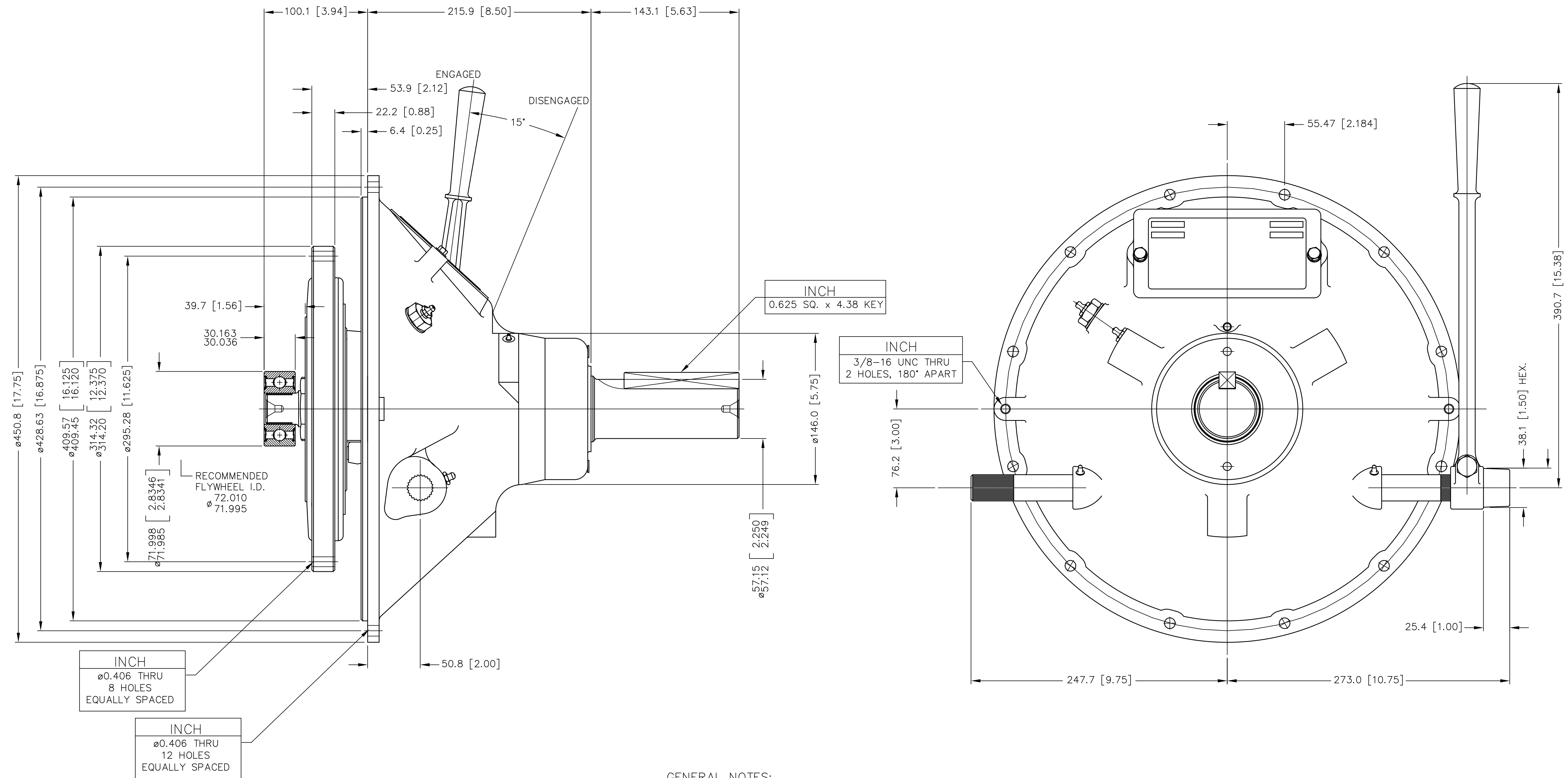


NOTE:
TO INSURE NO PRELOAD ON SHIFTING
MECHANISM. HAND LEVER POSITION SHOULD
BE SLIGHTLY PAST VERTICAL POSITION OR
TOWARDS ENGINE.



GENERAL NOTES:
a.) REFER TO BILL OF MATERIAL WHEN ORDERING PARTS.
b.) REFER TO CARE & OPERATION MANUAL FOR ADDITIONAL INFO.

ALL REFERENCES TO
CX110P302, CX110P303, CX110P304
AND CX110P305 WAS MOVE TO A
SEPARATE DWG.

UNLESS OTHERWISE SPECIFIED DIMENSIONS ARE mm MACHINED DIMENSIONS X ±0.75 X.X ±0.25 X.XX ±0.13 ALL ANGULAR TOLERANCES ±1° GEOMETRIC TOLERANCING PER ASME Y14.5M 1994	WEIGHT	WR ²	FIRST USE	METRIC	MATERIAL	HEAT TREAT	DATE	TWIN DISC INCORPORATED RACINE, WI 53403 - USA	
	kg	N.m ²	ASSY. CX110P301 MODEL C110HP3				08-06-02		
NOTICE: THIS PRINT CONTAINS PROPRIETARY INFORMATION AND IS NOT TO BE USED IN ANY MANNER DETRIMENTAL TO THE INTEREST OF TWIN DISC, INCORPORATE THIS NOTICE IS NOT INTENDED TO NULLIFY OR LIMIT RIGHTS GRANTED TO THE U.S. GOVERNMENT OR OTHERS BY CONTRACT.	SIMILAR TO			THIRD ANGLE PROJECTION	X8249	NAME	SCALE	CX110P301	
						C110HP3 POWER TAKE OFF	38 = 1		
							DRN.	DJH	REV
							CHK.	JTS	
							APP.	JTS	DWG
							SIZE	A1	SH.
								2	OF
								2	REV
									C