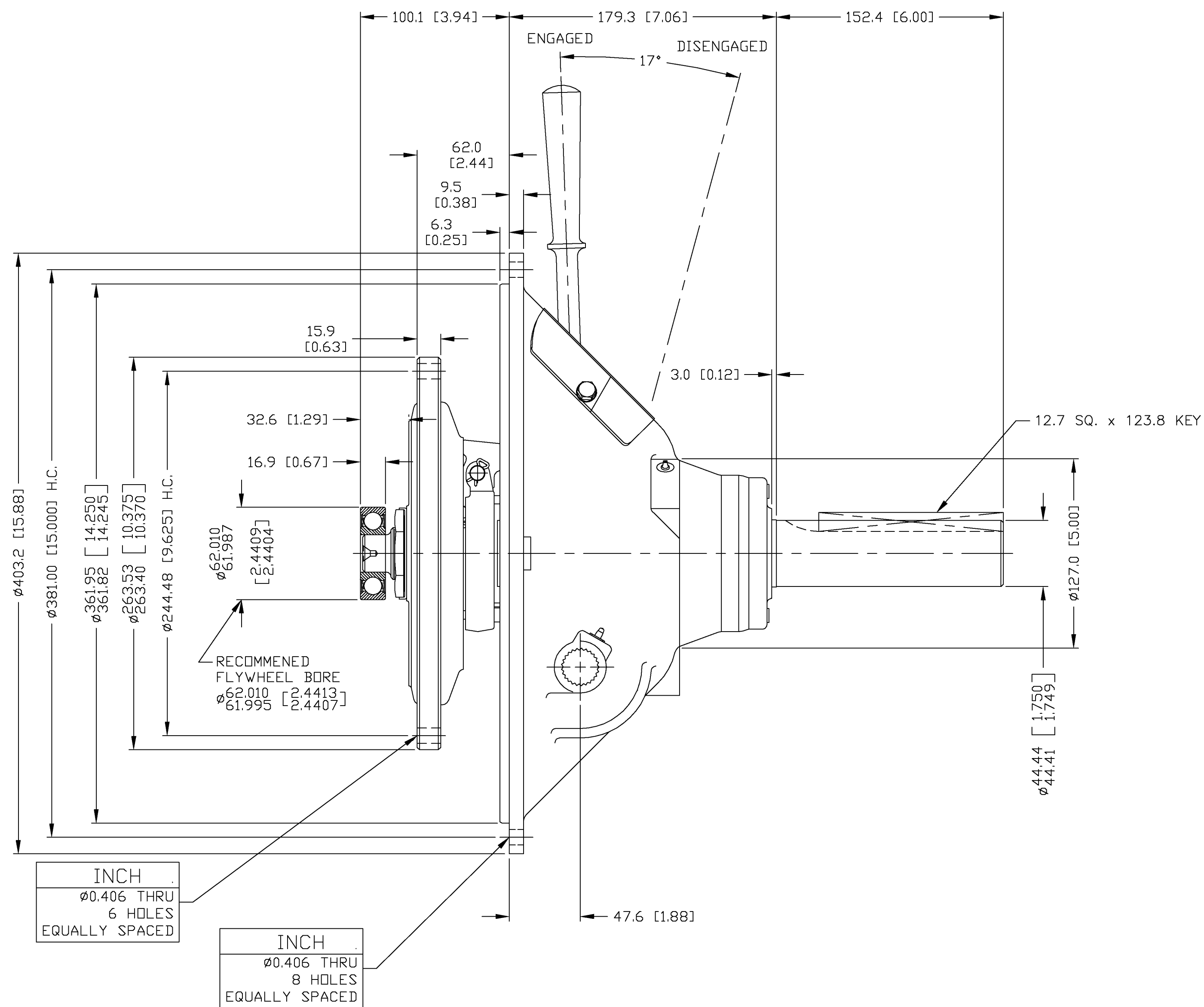
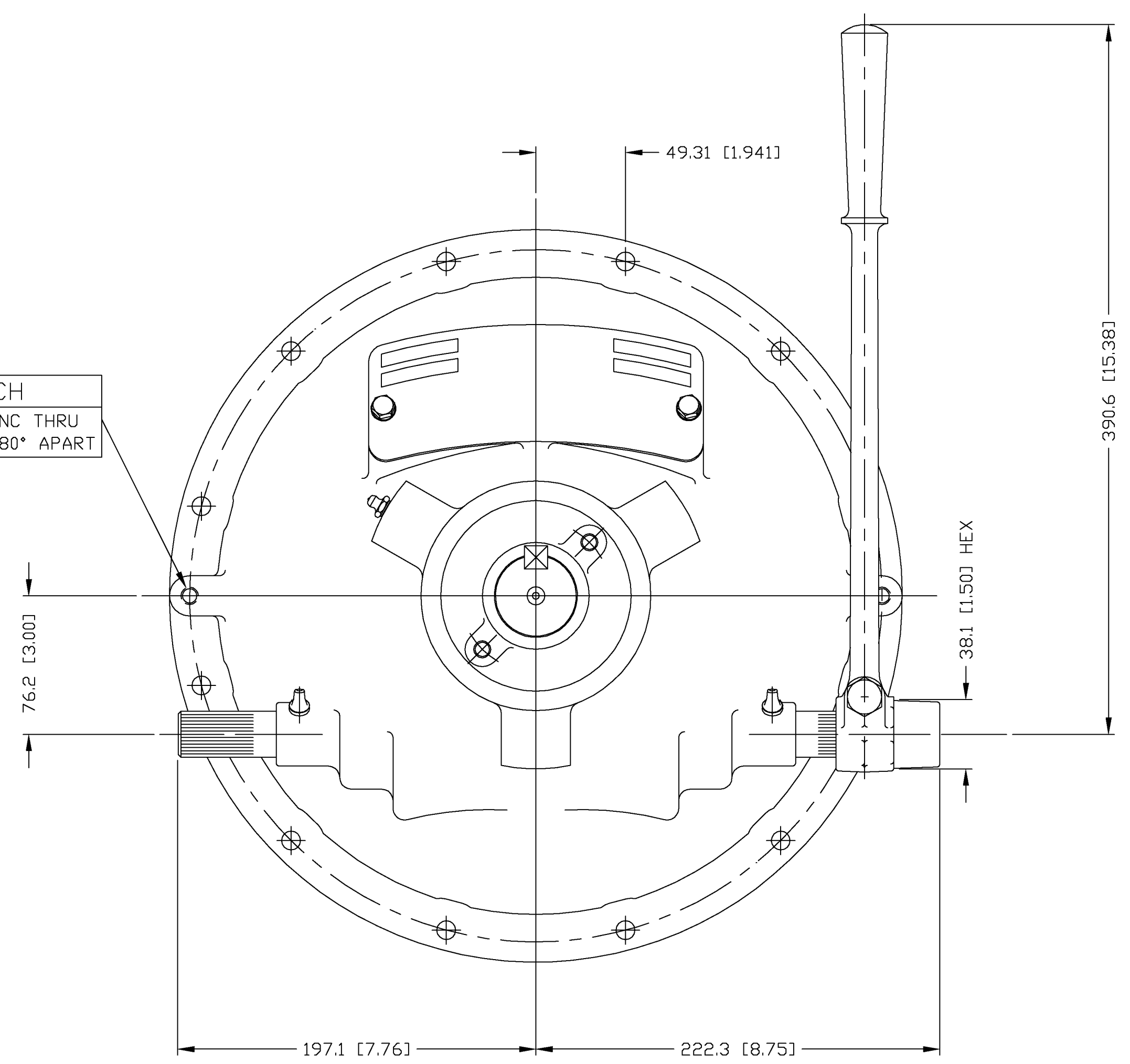


NOTE:
TO INSURE NO PRELOAD ON SHIFTING
MECHANISM, HAND LEVER POSITION SHOULD
BE SLIGHTLY PAST VERTICAL POSITION OR
TOWARDS ENGINE.



INCH
3/8-16 UNC THRU
2 HOLES, 180° APART



GENERAL NOTES:
a.) REFER TO BILL OF MATERIAL WHEN ORDERING PARTS.
b.) REFER TO CARE & OPERATION MANUAL FOR ADDITIONAL INFO.

UNLESS OTHERWISE SPECIFIED
DIMENSIONS ARE IN
MILLIMETERS
MACHINED DIMENSIONS
X ±0.75
XX ±0.25
XXX ±0.13
ALL ANGULAR TOLERANCES ±1°
GEOMETRIC TOLERANCING
PER ASME Y14.5M 1994

WEIGHT
N.W.
FIRST USE
ASSY. CX108P404
MODEL C108HP5
NOTICE: THIS PRINT CONTAINS PROPRIETARY INFORMATION AND IS NOT TO BE
USED IN ANY MANNER DETRIMENTAL TO THE INTEREST OF
TWIN DISC, INCORPORATED
THIS NOTICE IS NOT INTENDED TO WAIVE OR LIMIT RIGHTS GRANTED TO
THE U.S. GOVERNMENT OR OTHERS BY CONTRACT.

METRIC
THIRD ANGLE
PROJECTION

MATERIAL
HEAT TREAT
SIMILAR TO
NAME
C108HP4
POWER TAKEOFF

DATE 05-31-05	TWIN DISC INCORPORATED RACINE, WI 53403 - USA
SCALE 1.50 = 1	
DRN: DJH	CX108P404
CHK: JTS	
APPD: JTS	DWG SIZE A1
	SHT 2 OF 2
	REV C