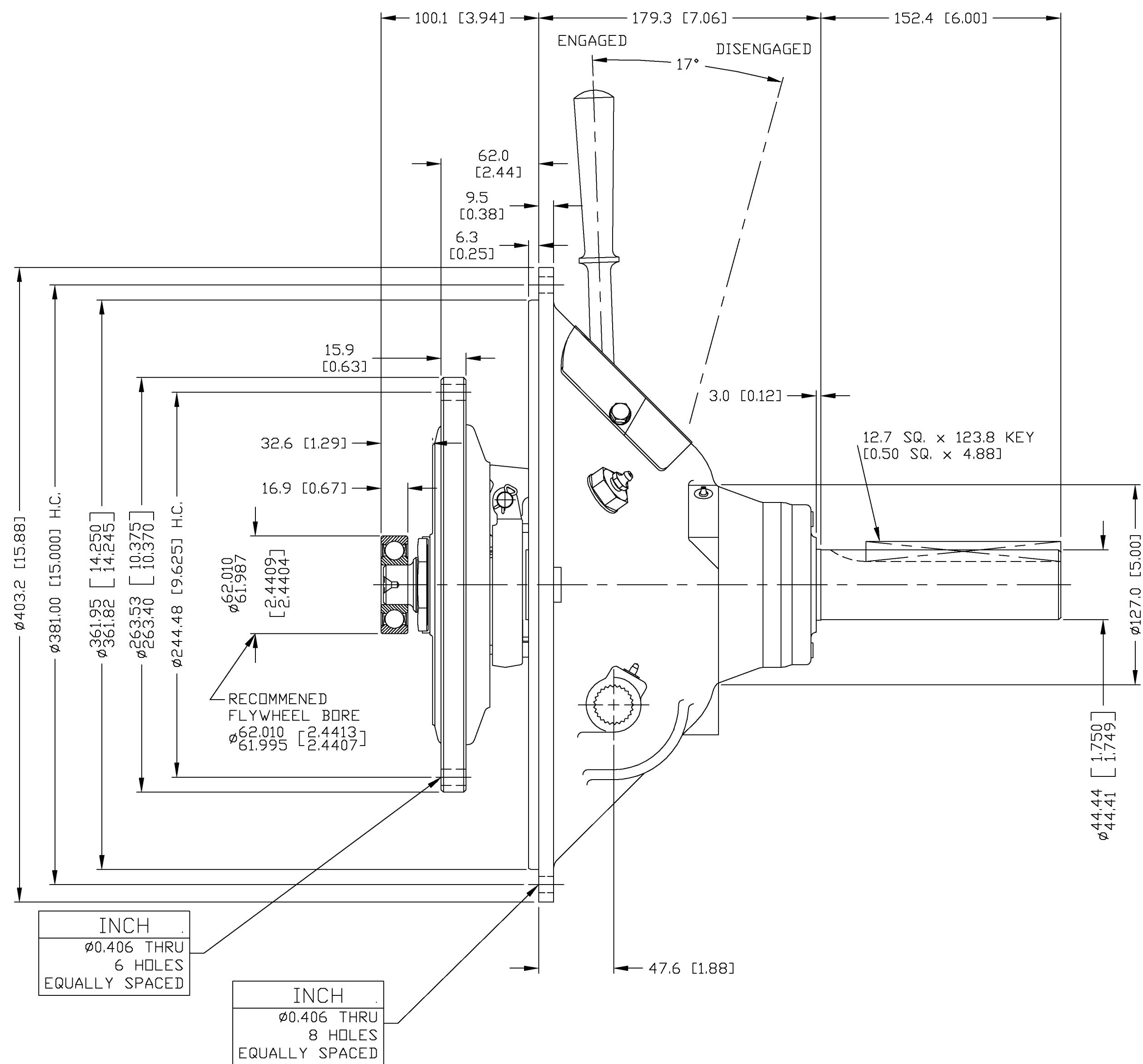
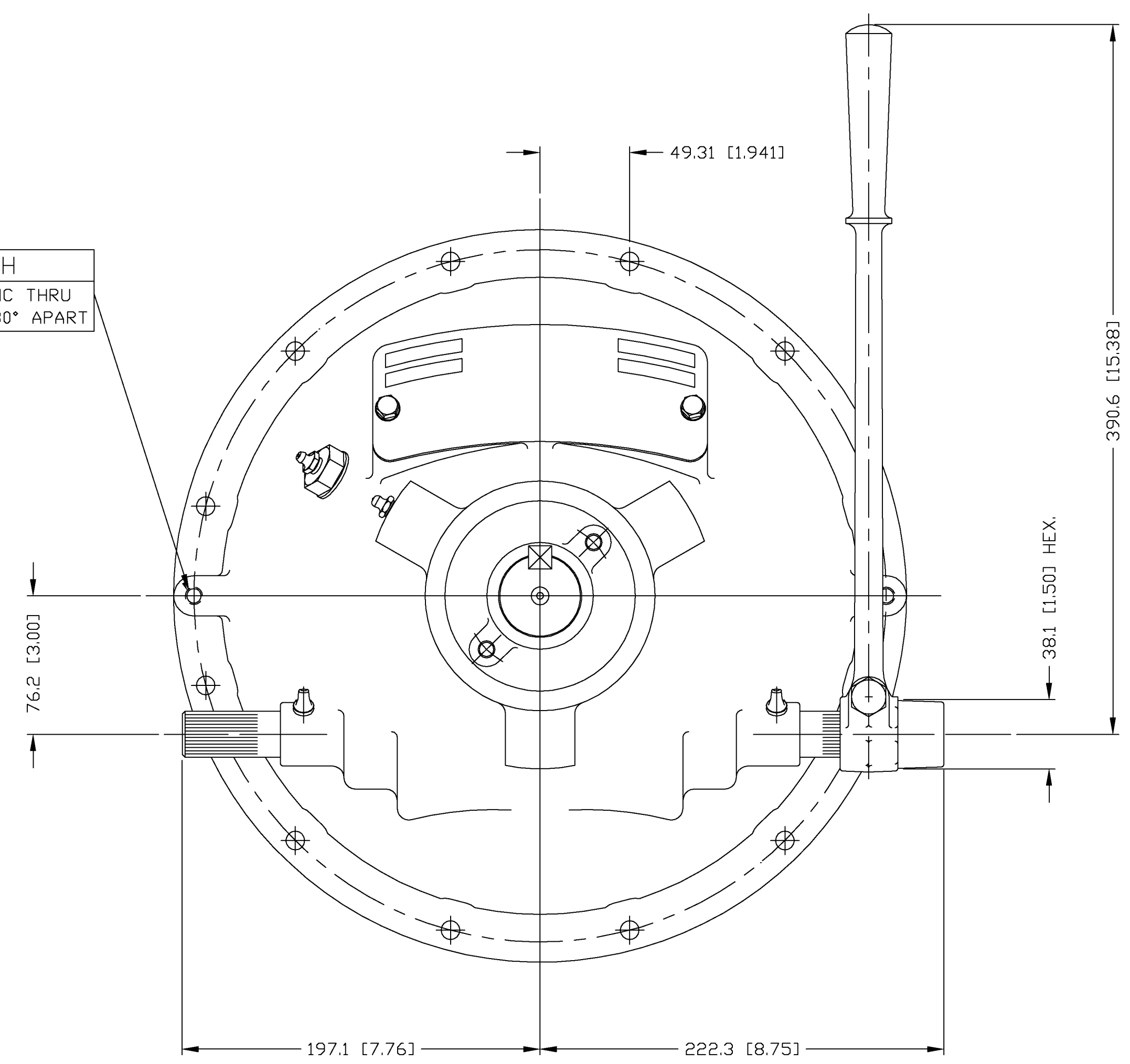


NOTE:
TO INSURE NO PRELOAD ON SHIFTING
MECHANISM, HAND LEVER POSITION SHOULD
BE SLIGHTLY PAST VERTICAL POSITION OR
TOWARDS ENGINE.



INCH
3/8-16 UNC THRU
2 HOLES, 180° APART



GENERAL NOTES:

- a.) REFER TO BILL OF MATERIAL WHEN ORDERING PARTS.
- b.) REFER TO CARE & OPERATION MANUAL FOR ADDITIONAL INFO.

UNLESS OTHERWISE SPECIFIED DIMENSIONS ARE IN MILLIMETERS MACHINED DIMENSIONS X .075 XX .025 XXX .013 ALL ANGULAR TOLERANCES ±1° GEOMETRIC TOLERANCING PER ASME Y14.5M 1994	WEIGHT	WR	FIRST USE
	kg	N.A.	ASSY. CX108P403 MODEL C108HP5
NOTICE: THIS PRINT CONTAINS PROPRIETARY INFORMATION AND IS NOT TO BE USED IN ANY MANNER DETRIMENTAL TO THE INTEREST OF TWIN DISC, INCORPORATED THIS NOTICE IS NOT INTENDED TO WAIVE OR LIMIT RIGHTS GRANTED TO THE U.S. GOVERNMENT OR OTHERS BY CONTRACT.			

METRIC
THIRD ANGLE
PROJECTION

MATERIAL	HEAT TREAT
SIMILAR TO	NAME C108HP4 POWER TAKEOFF

DATE 05-31-05	TWIN DISC INCORPORATED RACINE, WI 53403 - USA
SCALE 1:50 = 1	
DRAWN DJH	CX108P403
CHECKED JTS	
APPROVED JTS	DWG SIZE A1
	SHEET 2 OF 2
	REV B