



***For Your Convenience: This File Is
Shared By Diesel Parts Direct***



YOUR ONE STOP SUPERSTORE FOR DIESEL ENGINE PARTS

SHOP NOW

A large, dark blue, semi-transparent image of interlocking gears is positioned on the right side of the page, extending from the top right corner towards the bottom.

Level Swichgag[®] Instrument For Engine Liquids L150/ EL150K1 Series



Features

- Monitors Level of Coolant, Lube Oil, Diesel Fuel And Hydraulic Fluid.
- Indicating Gauge
- Low Limit Switch
- Float Operated
- Explosion-Proof Model Is Available

* EL150EX Models are CSA Listed for Class I, Division 1, Group C & D Hazardous Locations

† Products covered by this bulletin comply with EMC Council directive 89/336/EEC regarding electromagnetic compatibility except as noted.

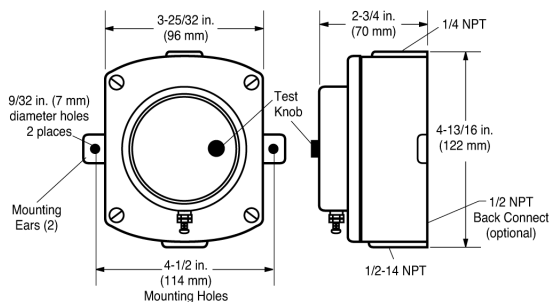
The L150 Series Level Swichgag instrument is a combination liquid level gauge and low limit switch; each unit includes (1) a chamber with pivotal float, (2) an indicating dial with pointer, and (3) a low level contact. When properly installed and maintained, the float operates the pointer which, in turn, both indicates level during normal operation, and closes a switching circuit if the level falls to the low-limit set point.

Applications

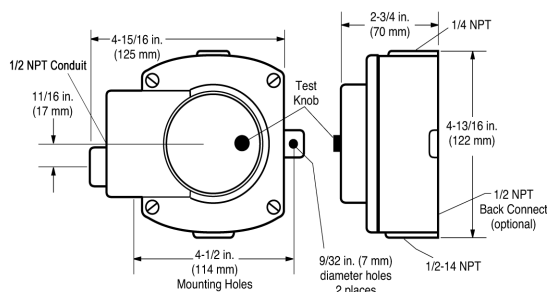
The primary use of the L150/EL150K1 is for engine cooling systems, surge or expansion tanks, condenser radiator or vapor phase systems, pressurized or atmospheric systems. The Level Swichgag instrument can also be used to monitor lube oil, hydraulic fluid or diesel fuel reservoirs and activates alarms and/or shut-down at a predetermined minimum level. These instruments are built for low pressure systems with a maximum of 25 psi (172 kPa) [1.72 bar].

Dimensions

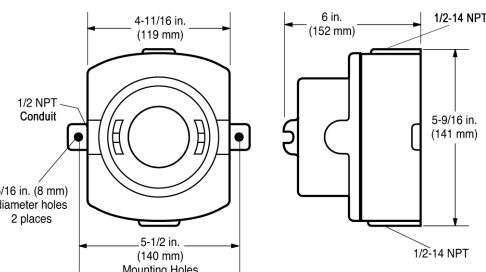
L150



EL150K1



EL150EX

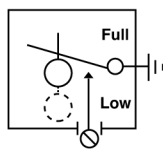


Standard Electrical Diagrams

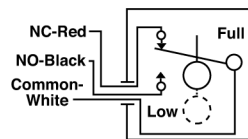


WARNING: This typical wiring diagram is shown for clarity only. It is not intended for use as installation instructions.

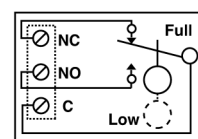
L150



EL150K1



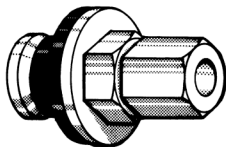
EL150EX



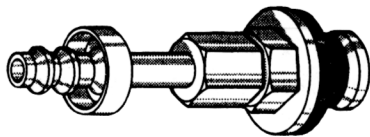
Radiator Fittings

Murphy PS, PS Barbed and PS-D fittings allow the installation of the L150/EL150K1 to the radiator when a fitting is not available.

- **15-00-0107 (PS):** thin wall, 1/4 in. (6 mm) tube fitting.
- **15-01-0167 (PS-Barbed):** thin wall, 1/4 in. (6 mm) tubing or hose.
- **15-01-0202 (PS-D):** for diesel or oil, thick wall (to 1/4 in. [6 mm]), accepts 1/2 in. (13 mm) I.D. hose or 1/4 in. (6 mm) O.D. tubing.



15-00-0107 (PS)



15-01-0167 (PS Barbed)

Repair Kits

- L150**
- 15-00-0138 All parts except case and body
 - 15-00-0101 Case/body assembly
- EL150K1**
- 15-00-0139 All parts except case and body
 - 15-00-0101 Case/body assembly
 - 15-00-0100 Lens/switch assembly
- EL150EX**
- 15-00-0110 Cover and float assembly
 - 15-00-0108 Lid assembly
 - 15-00-0109 Switch/terminal assembly

Accessories

Specify	Description
15-00-0107	Radiator fitting (PS)
15-01-0202	Radiator fitting (PS-D)
15-01-0167	Radiator fitting (PS Barbed)
15-70-0854	Visor Kit, EL150K1 (knob guard)

Specifications

L150 Specifications

- Case:** Die cast aluminum, poly-urethane coated; approximate dimensions; 4-1/2 x 4-3/4 x 2-3/4 in. (114 x 121 x 70 mm).
- Mounting Holes:** (2) 9/32 in. (7 mm) diameter at 4-1/2 in. (114 mm) on center.
- Float:** Brass.
- Lens:** Polycarbonate.
- O-rings:** Saturated Nitrile, are suitable for coolant or hydrocarbons. Maximum temperature 250°F (121°C).
- Gasket:** Nitrile.
- Vent Tube:** 1/4 x 5 in. (6 x 127 mm) copper cane with 1/4 NPT x 1/4 in. (6 mm) tube fitting.
- Contact Rating:** 2 A @ 30 VAC/DC.
- Wire:** (1) 16 AWG x 26 in. (1.5 mm² x 660 mm) with terminals.
- Shipping Weight:** 29 oz. (0.82 kg.).
- Shipping Dimensions:** 5-1/4 x 5-1/4 x 5-1/2 in. (133 x 133 x 140 mm).

EL150K1 Specifications

- Case:** Die cast aluminum, poly-urethane coated; approximate dimensions; 5 x 4-3/4 x 2-3/4 in. (127 x 121 x 70 mm).
- Enclosure Rating:** IP35
- Mounting Holes:** (2) 9/32 in. (7 mm) diameter at 4-1/2 in. (114 mm) on center.
- Float:** Brass.
- Lens:** Polycarbonate.
- O-rings:** Saturated Nitrile, are suitable for coolant or hydrocarbons. Maximum temperature 250°F (121°C).
- Gasket:** Nitrile.
- Vent Tube:** 1/4 x 5 in. (6 x 127 mm) copper cane with 1/4 NPT x 1/4 in. (6 mm) tube fitting.
- Snap-Switch:** SPDT rated 10 A @ 125 VAC; 0.5 A @ 125 VDC; 10 A 30 VDC.
- Wire:** (3) 18 AWG x 14 in. (1 mm² x 356 mm).
- Shipping Weight:** 42 oz. (1.2 kg.).
- Shipping Dimensions:** 5-1/4 x 5-1/4 x 5-1/2 in. (133 x 133 x 140 mm).

EL150EX Specifications

- Case:** Sand cast aluminum, painted; approximate dimensions; 6-1/2 x 5-3/4 x 5-1/4 in. (165 x 146 x 133 mm).
- Mounting Holes:** (2) 5/16 in. (8 mm) diameter at 5-1/2 in. (140 mm) on center.
- Float:** 304 Stainless steel.
- Lens:** Tempered glass.
- O-rings:** Saturated Nitrile, are suitable for coolant or hydrocarbons. Maximum temperature 250°F (121°C).
- Gasket:** Nitrile.
- Vent Tube:** 1/4 x 5 in. (6 x 127 mm) copper cane with 1/4 NPT x 1/4 in. (6 mm) tube fitting and 1/2 NPT to 1/4 NPT reducer fitting.
- Snap-Switch:** SPDT rated 10 A @ 125 VAC; 0.5 A @ 125 VDC; 10 A 30 VDC.
- Wire:** Wired to terminal block.
- Laboratory Approvals:** CSA Listed for Hazardous Locations Class I, Division 1, Groups C & D.
- Shipping Weight:** 5 lbs. (2.26 kg.).
- Shipping Dimensions:** 6-1/2 x 6-3/4 x 6-3/8 in. (165 x 171 x 162 mm).